

Description

The TN4054D is a low cost, Single-cell, constant-current/constant-voltage Li-Ion battery charger. with a few external components, the TN4054D is very small stand alone charger for single lithium-ion batteries.

Charge current is set externally with a single resistor, no blocking diode is required due to the internal MOSFET architecture. The TN4054D charges to a final float voltage accurate to $\pm 0.6\%$, The TN4054D automatically terminates the charge cycle when the charge current drops to 1/10th the programmed value after the final float voltage is reached and automatically puts into a sleep mode while removing input power.

The output is both current and thermally protected to prevent operating outside of safe limits. UVLO, Thermal, OVP and reverse connection protection are also available.

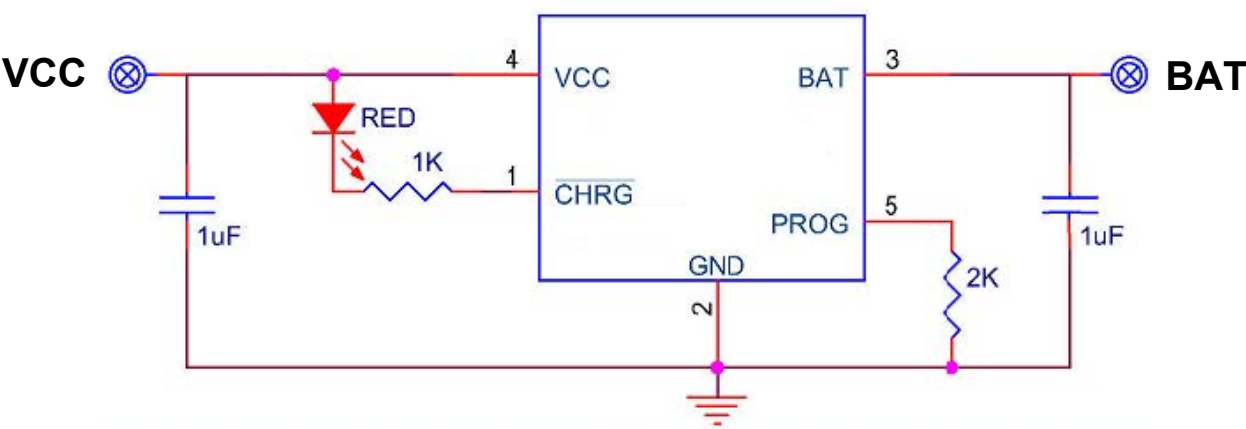
Features

- Standalone Li-Ion Charger with Thermal Regulation
- Programmable Charge Current Up to 600mA
- No Sense Resistor or Blocking Diode Required Preset Charge
- Voltage with $\pm 0.6\%$ Accuracy
- Suitable for USB-Powered Charging
- 6.2V Input Over Voltage Protect
- C/10 Charge Termination
- 12V Absolute Maximum Input Voltage
- Low Battery Charging Conditioning
- Automatic Recharge
- Negligible Battery Drain Current in Shutdown
- Protection Against Battery Reverse Connection
- Self-protection for Overcurrent/Overtemperature
- Available in SOT-23-5 Package

Application

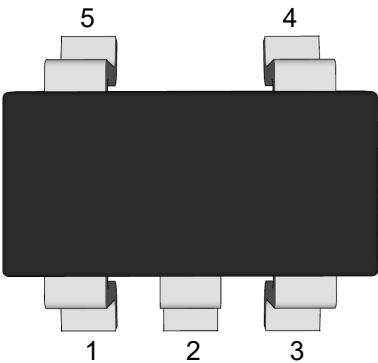
- Cellular Telephones
- Charging Docks and Cradles
- Handheld Computers
- Low Cost and Small Size Chargers

Typical Applications



Pin Distribution

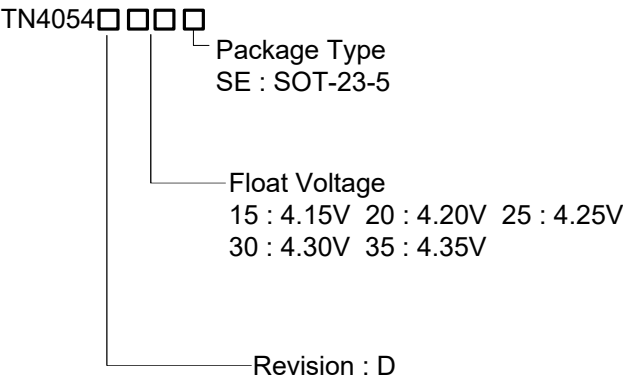
SOT-23-5



Pin Function

Pin No.	Symbol	Pin Function
1	CHRG	Open-Drain Charge Status Output.
2	GND	Ground Pin.
3	BAT	Charging Current Output.
4	VCC	Positive Input Vower Voltage.
5	PROG	Charge Current Program, Charge Current Monitor and Shutdown Pin.

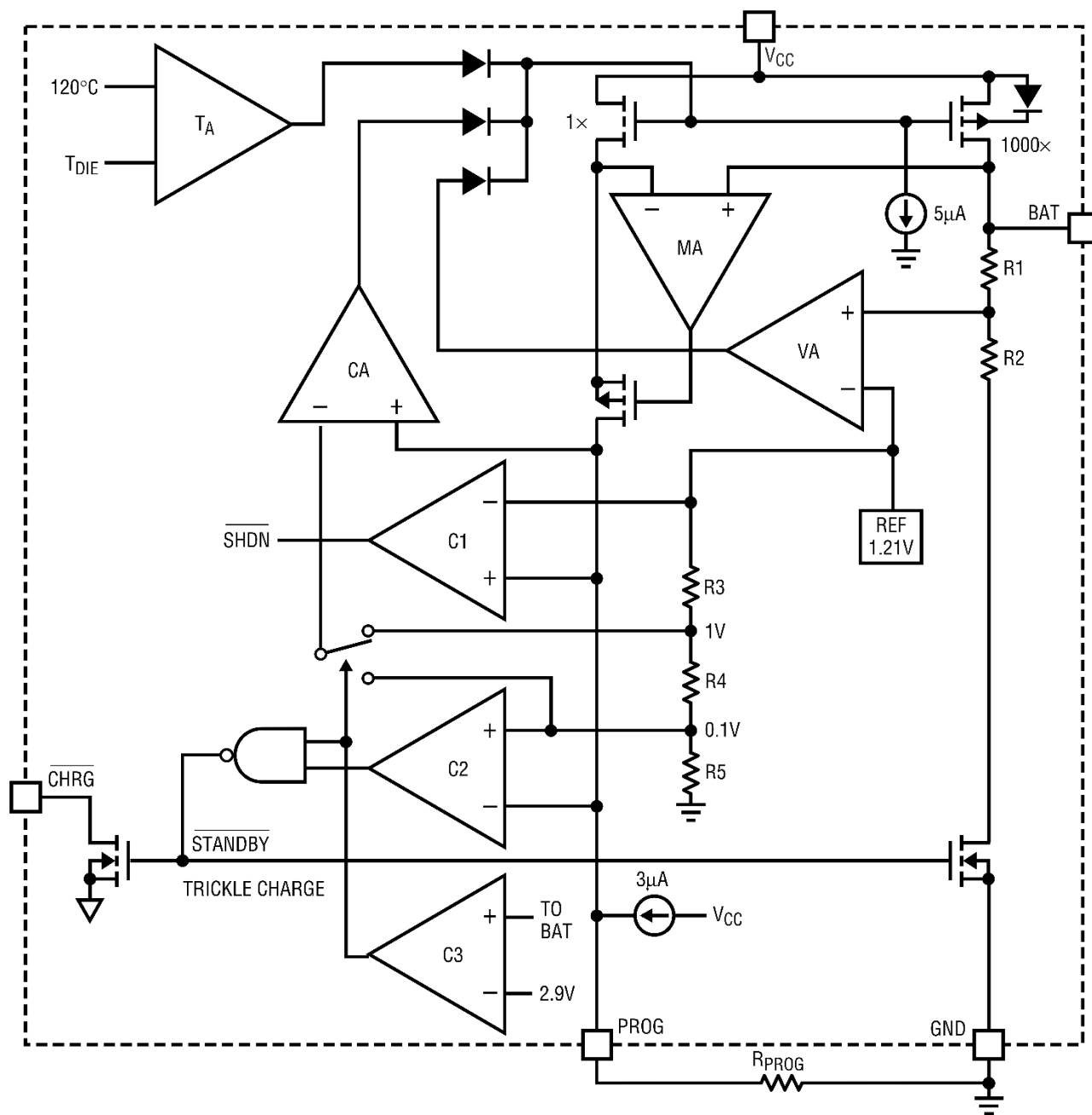
Ordering Information



Orderable Device	Package	Reel (inch)	Package Qty (PCS)	Eco Plan ^{Note}	MSL Level	Marking Code
TN4054D15SE	SOT-23-5	7	3000	RoHS & Green	MSL3	
TN4054D20SE	SOT-23-5	7	3000	RoHS & Green	MSL3	
TN4054D25SE	SOT-23-5	7	3000	RoHS & Green	MSL3	
TN4054D30SE	SOT-23-5	7	3000	RoHS & Green	MSL3	
TN4054D35SE	SOT-23-5	7	3000	RoHS & Green	MSL3	

Note:
RoHS: TN defines "RoHS" to mean semiconductor products that are compliant with the current EU RoHS requirements for all 10 RoHS substances, including the requirement that RoHS substance do not exceed 0.1% by weight in homogeneous materials.
Green: TN defines "Green" to mean Halogen-Free and Antimony-Free.

Block Diagram



Absolute Maximum Ratings

Ratings at 25°C ambient temperature unless otherwise specified.

Parameter	Symbol	Ratings	Unit
VCC Input Voltage	V _{CC}	-0.3~12	V
Prog Pin Voltage	V _{PROG}	-0.3~8.5	V
CHG,BAT Pin Voltage	V _{BAT}	-4.5~5.5	V
Power Dissipation	P _D	0.6	W
Operating Junction Temperature Range	T _J	-40~+150	°C
Storage Temperature	T _{STG}	-55~+150	°C

Thermal Information

Parameter	Symbol	Ratings	Unit
Junction-to-Ambient Thermal Resistance	R _{θJA}	170	°C/W
Junction-to-Case (top) Thermal Resistance	R _{θJC}	130	°C/W

Electrical Characteristics

(V_{IN}=5V, T_J=25°C , unless otherwise noted.)

Parameter	Symbol	Test Conditions	Min.	Typ.	Max.	Unit
Input Supply Voltage	V _{CC}		4.5	--	6.2	V
Input Supply Current	I _{CC}		--	150	--	μA
Regulated Output (Float) Voltage	V _{FLOAT}		-0.6	--	0.6	%
BAT Pin Current	I _{BAT}	R _{PROG} = 2k	460	500	540	mA
		R _{PROG} = 10k	90	100	110	mA
Trickle Charge Current	I _{TRIKL}	R _{PROG} = 2k	--	50	--	mA
		R _{PROG} = 10k	--	10	--	
Trickle Charge Threshold	V _{TRIKL}		--	2.9	--	V
C/10 Termination Current	I _{TERM}		8.5	10	11.5	%
PROG Pin Voltage	V _{PROG}		0.93	1.0	1.07	V
Recharge Battery Threshold	ΔV _{RECHG}		--	100	--	mV
CHRG Pin Weak Pull Down Current	I _{CHRG}		--	3	--	mA
PROG Pin Pull-Up Current	I _{PROG}		--	3	--	μA
RechargeComparat or Filter time	t _{RECHARGE}		--	2	--	mS
Soft-Start time	t _{SS}		--	700	--	μS
Junction Temperature in Constant Temperature Mode	T _{LIM}		--	120	--	°C
Power FET On resistance			--	600	--	mΩ

Operation

The TN4054D is a single cell lithium-ion battery charger using a constant-current constant-voltage algorithm. It can deliver up to 600mA of charge current (using a good thermal PCB layout) with a final float voltage accuracy of $\pm 1\%$. The TN4054D includes an internal P-channel power MOSFET and thermal regulation circuitry. No blocking diode or external current sense resistor is required; thus, the basic charger circuit requires only two external components. Furthermore, the TN4054D is capable of operating from a USB power source.

Normal Charge Cycle

A charge cycle begins when the voltage at the VCC pin rises above the UVLO threshold level and a 1% program resistor is connected from the PROG pin to ground or when a battery is connected to the charger output. If the BAT pin is less than 2.9V, the charger enters trickle charge mode. In this mode, the TN4054D supplies approximately 1/10 the programmed charge current to bring the battery voltage up to a safe level for full current charging. When the BAT pin voltage rises above 2.9V, the charger enters constant-current mode, where the programmed charge current is supplied to the battery. When the BAT pin approaches the final float voltage (4.2V), the TN4054D enters constant-voltage mode and the charge current begins to decrease. When the charge current drops to 1/10 of the programmed value, the charge cycle ends.

Programming Charge Current

The charge current is programmed using a single resistor from the PROG pin to ground. The battery charge current is 1000 times the current out of the PROG pin. The program resistor and the charge current are calculated using the following equations:

$$R_{\text{PROG}} = \frac{1000V}{I_{\text{CHG}}} \qquad I_{\text{PROG}} = \frac{1000V}{R_{\text{PROG}}}$$

The charge current out of the BAT pin can be determined at any time by monitoring the PROG pin voltage using the following equation:

$$I_{\text{BAT}} = \frac{V_{\text{PROG}}}{R_{\text{PROG}}} \times 1000$$

Charge Termination

A charge cycle is terminated when the charge current falls to 1/10th the programmed value after the final float voltage is reached. This condition is detected by using an internal, filtered comparator to monitor the PROG pin. When the PROG pin voltage falls below 100mV for longer than 1ms, charging is terminated. The charge current is latched off and the TN4054D enters standby mode, where the input supply current drops to 170μA. When charging, transient loads on the BAT pin can cause the PROG pin to fall below 100mV for short periods of time before the DC charge current has dropped to 1/10th the programmed value. The 1ms filter time on the termination comparator ensures that transient loads of this nature do not result in premature charge cycle termination. Once the average charge current drops below 1/10th the programmed value, the TN4054D terminates the charge cycle and ceases to provide any current through the BAT pin. In this state, all loads on the BAT pin must be supplied by the battery. The TN4054D constantly monitors the BAT pin voltage in standby mode. If this voltage drops below the 4.1V recharge threshold (VRECHRG), another charge cycle begins and current is once again supplied to the battery. To manually restart a charge cycle when in standby mode, the input voltage must be removed and reapplied, or the charger must be shut down and restarted using the PROG pin.

Charge Status Indicator

The CHRG charge status output has two different states: strong pull-down and high impedance. The CHRG strong pull-down state indicates that the TN4054D is in a charge cycle. Once the charge cycle has terminated, the CHRG pin state is change to High impedance.

Charging Status	CHRG
Charging	Bright
Charge Complete	Snuffed Out
NO Battery	Flashing
Undervotagle	Snuffed Out
Reverse Battery Connection	Snuffed Out

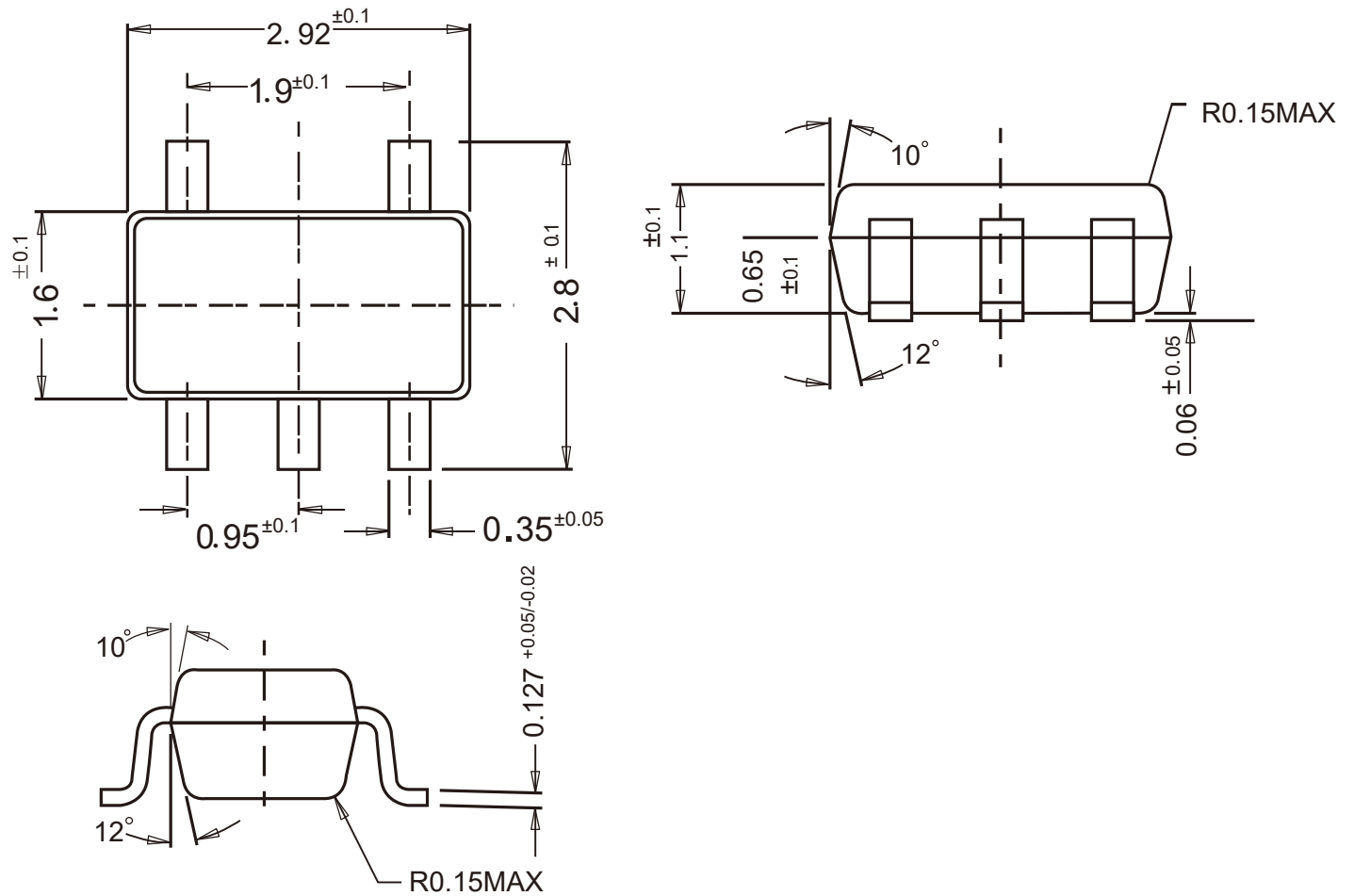
Thermal Limiting

An internal thermal feedback loop reduces the programmed charge current if the die temperature attempts to rise above a preset value of approximately 120°C. This feature protects the TN4054D from excessive temperature and allows the user to push the limits of the power handling capability of a given circuit board without risk of damaging the TN4054D. The charge current can be set according to typical (not worst-case) ambient temperature with the assurance that the charger will automatically reduce the current in worst-case conditions.

Because of the small size of the SOT package, it is very important to use a good thermal PC board layout to maximize the available charge current. The thermal path for the heat generated by the IC is from the die to the copper lead frame, through the package leads, (especially the ground lead to the PC board copper. The PC board copper is the heat sink. The footprint copper pads should be as wide as possible and expand out to larger copper areas to spread and dissipate the heat to the surrounding ambient. Feedthrough vias to inner or backside copper layers are also useful in improving the overall thermal performance of the charger. Other heat sources on the board, not related to the charger, must also be considered when designing a PC board layout because they will affect overall temperature rise and the maximum charge current.

Package Outline


SOT-23-5 Dimensions in mm



Contact Information

TANI website: <http://www.tanisemi.com> Email: tani@tanisemi.com

For additional information, please contact your local Sales Representative.

 is registered trademarks of TANI Corporation.

Product Specification Statement

The product specification aims to provide users with a reference regarding various product parameters, performance, and usage. It presents certain aspects of the product's performance in graphical form and is intended solely for users to select product and make product comparisons, enabling users to better understand and evaluate the characteristics and advantages of the product. It does not constitute any commitment, warranty, or guarantee.

The product parameters described in the product specification are numerical values, characteristics, and functions obtained through actual testing or theoretical calculations of the product in an independent or ideal state. Due to the complexity of product applications and variations in test conditions and equipment, there may be slight fluctuations in parameter test values. TANI shall not guarantee that the actual performance of the product when installed in the customer's system or equipment will be entirely consistent with the product specification, especially concerning dynamic parameters. It is recommended that users consult with professionals for product selection and system design. Users should also thoroughly validate and assess whether the actual parameters and performance when installed in their respective systems or equipment meet their requirements or expectations.

Additionally, users should exercise caution in verifying product compatibility issues, and TANI assumes no responsibility for the application of the product. TANI strives to provide accurate and up-to-date information to the best of our ability. However, due to technical, human, or other reasons, TANI cannot guarantee that the information provided in the product specification is entirely accurate and error-free. TANI shall not be held responsible for any losses or damages resulting from the use or reliance on any information in these product specifications.

TANI reserves the right to revise or update the product specification and the products at any time without prior notice, and the user's continued use of the product specification is considered an acceptance of these revisions and updates. Prior to purchasing and using the product, users should verify the above information with TANI to ensure that the product specification is the most current, effective, and complete. If users are particularly concerned about product parameters, please consult TANI in detail or request relevant product test reports. Any data not explicitly mentioned in the product specification shall be subject to separate agreement.

Users are advised to pay attention to the parameter limit values specified in the product specification and maintain a certain margin in design or application to ensure that the product does not exceed the parameter limit values defined in the product specification. This precaution should be taken to avoid exceeding one or more of the limit values, which may result in permanent irreversible damage to the product, ultimately affecting the quality and reliability of the system or equipment.

The design of the product is intended to meet civilian needs and is not guaranteed for use in harsh environments or precision equipment. It is not recommended for use in systems or equipment such as medical devices, aircraft, nuclear power, and similar systems, where failures in these systems or equipment could reasonably be expected to result in personal injury. TANI shall assume no responsibility for any consequences resulting from such usage.

Users should also comply with relevant laws, regulations, policies, and standards when using the product specification. Users are responsible for the risks and liabilities arising from the use of the product specification and must ensure that it is not used for illegal purposes. Additionally, users should respect the intellectual property rights related to the product specification and refrain from infringing upon any third-party legal rights. TANI shall assume no responsibility for any disputes or controversies arising from the above-mentioned issues in any form.